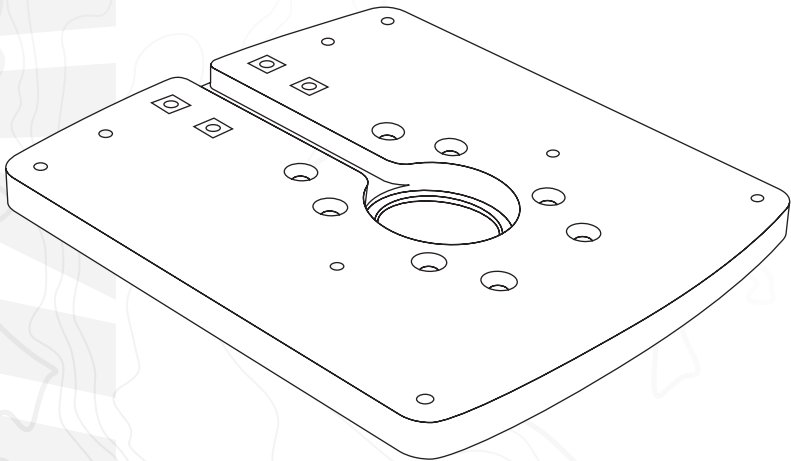


# **SEAVIEW**

**ELEVATE YOUR ELECTRONICS**



## **INSTALLATION INSTRUCTIONS**

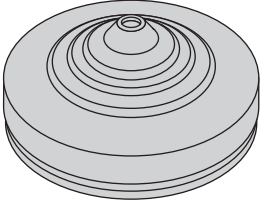
For Seaview Modular Top Plate:

**ADA-R2**

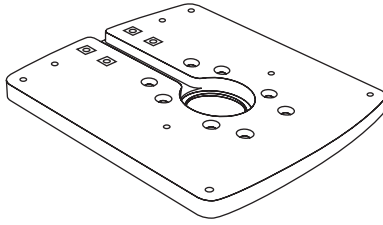
Refer to website for most up to  
date instructions and videos.

**[WWW.SEAVIEWGLOBAL.COM](http://WWW.SEAVIEWGLOBAL.COM)**

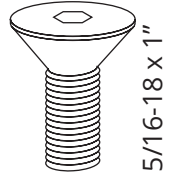
# PARTS INCLUDED



**X1**



**X1**



**X8**

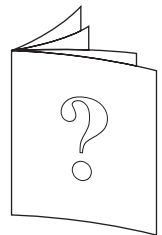
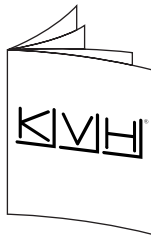
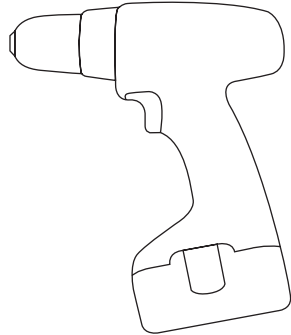
5/16-18 x 1"

---

# TOOLS NEEDED

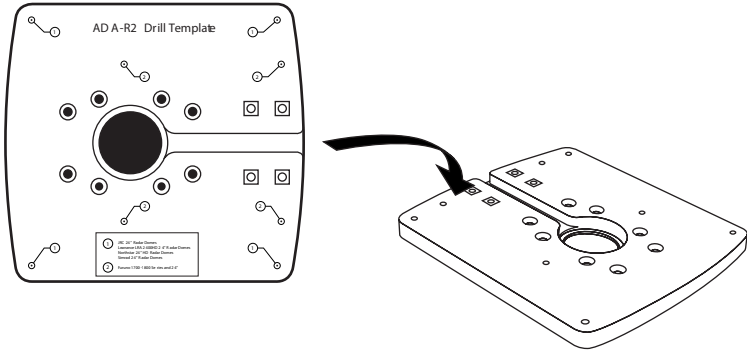


Sudbury Elastomeric Marine Sealant is recommended. To purchase call 800-655-7922 or visit [www.seaviewglobal.com](http://www.seaviewglobal.com)

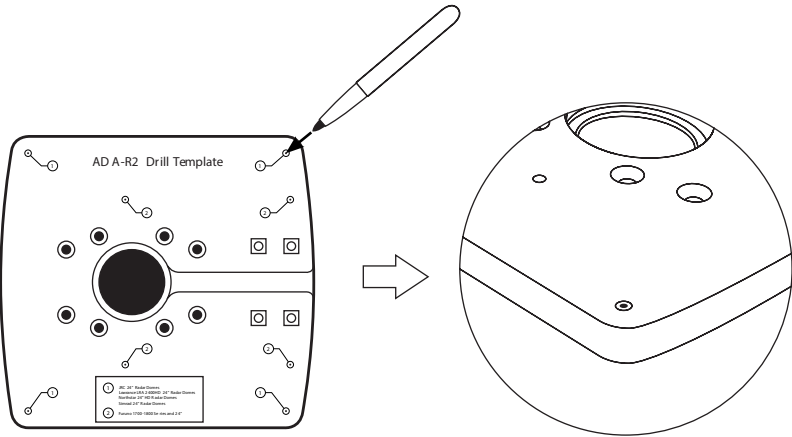


**1** Locate the Make and Model of your satellite dome on this chart and determine which drill hole number yours is. Then place the ADA-R2 Drill Template on top of the ADA-R2.

Hole #	Manufacturer	Model
2	Furuno	1700 - 1800 Series 24" radar domes
1	JRC	24" radar domes
1	Lowrance	LRA 2400HD, 24" radar domes
1	Northstar	24 HD, 24" radar domes
1	Simrad	24" radar domes
1	Sitex	24" (T761)

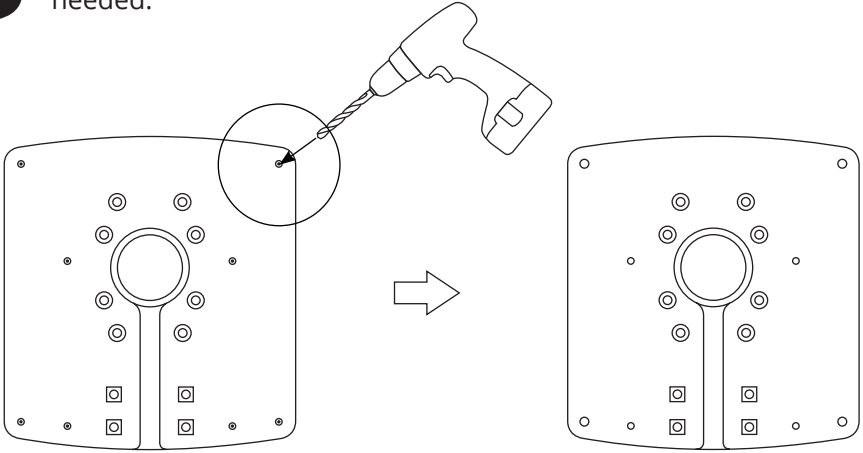


**2** Once you determine which drill hole number you require mark the four holes.



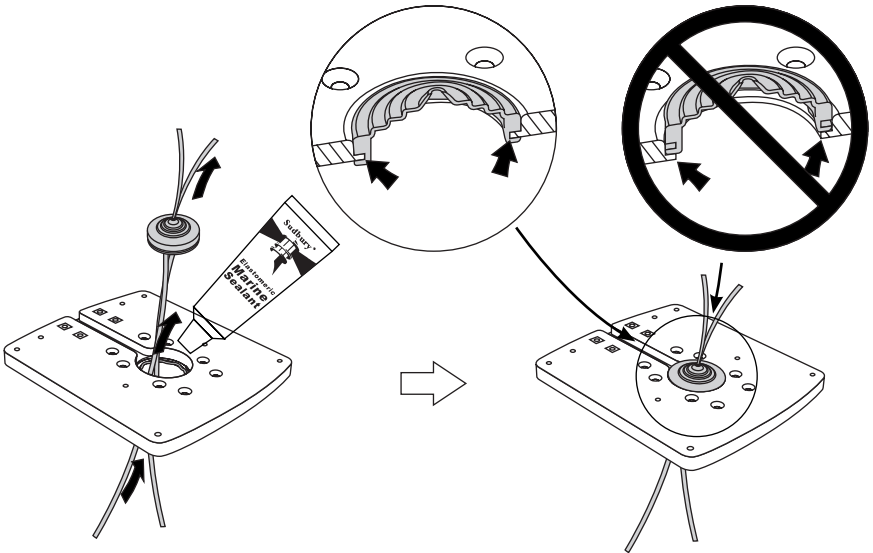
# 3

Drill the four marked holes. Be sure to check with your marine electronic manufacturers manual to determine what size drill bit is needed.



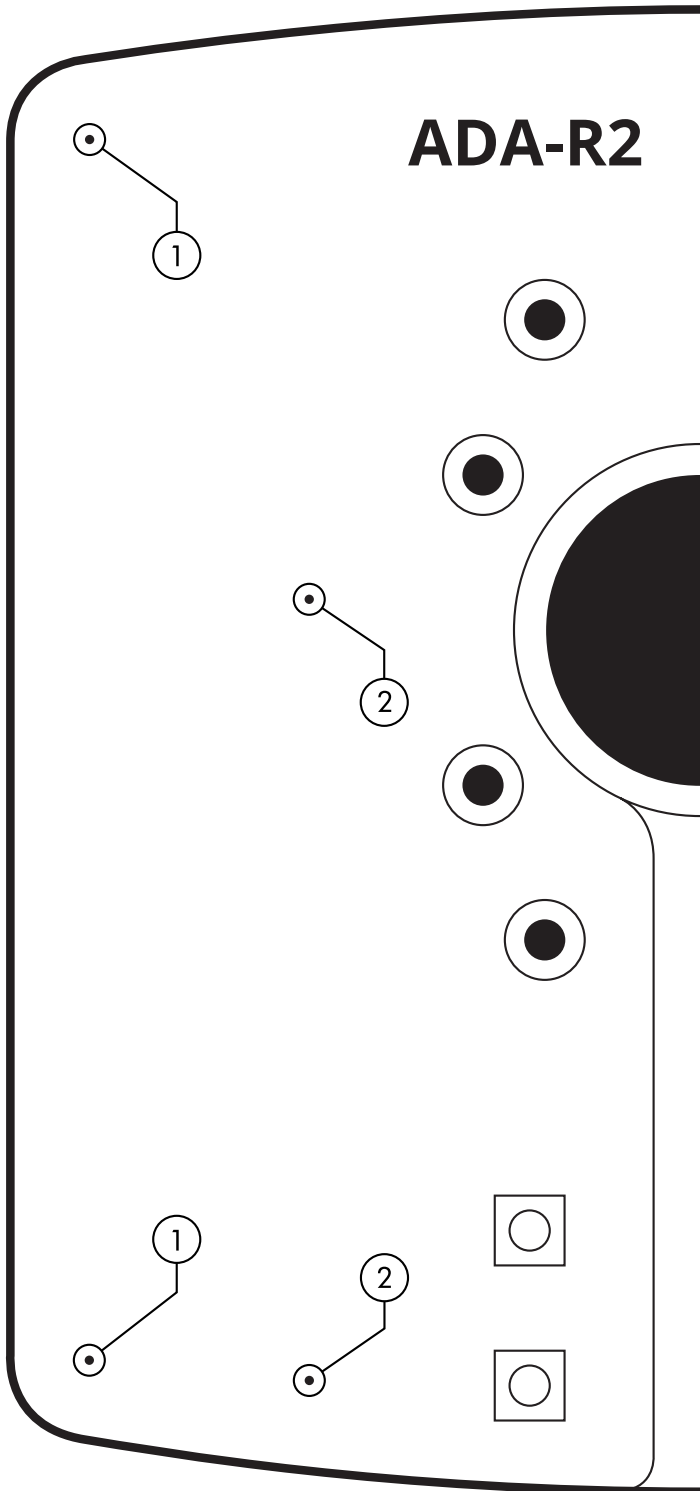
# 4

Apply marine adhesive sealant along the lip in the center hole on the ADA-R2. Route the cabling through the center hole in the ADA-R2. Then insert through the black rubber grommet. When inserting the black rubber grommet into the ADA-R2 be sure that the center lip falls into the groove in the grommet.

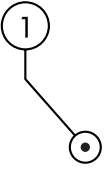
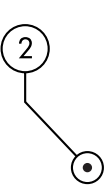
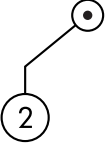
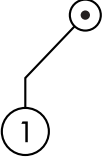


Page intentionally left blank.

# ADA-R2



# Drill Template



**NOT to scale**

The background of the entire page is a light gray topographic map with white contour lines. The lines are irregular and wavy, representing elevation changes across a landscape. The map is centered and fills the entire frame.

***SEAVIEW//***  
***ELEVATE YOUR ELECTRONICS***

***SEAVIEW//***

Tel: 800-655-7922  
[www.seaviewglobal.com](http://www.seaviewglobal.com)

***EUROPEAN OFFICE***

Tel: +33 4 94 53 27 70  
[www.seaviewprogress.com](http://www.seaviewprogress.com)

4-080619