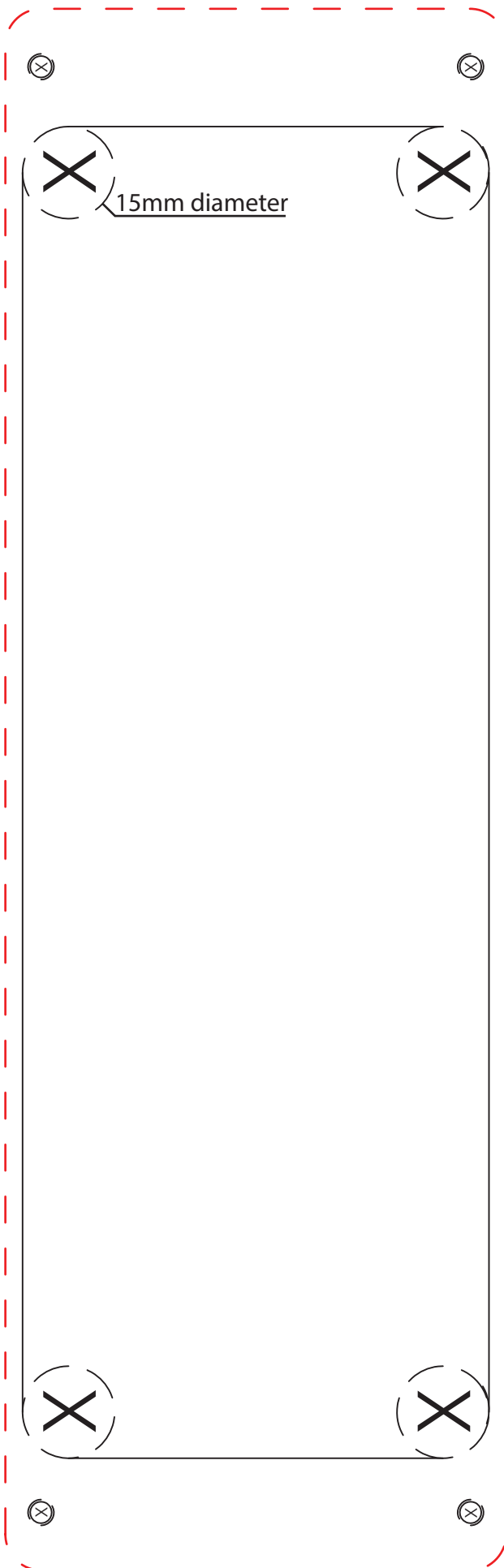
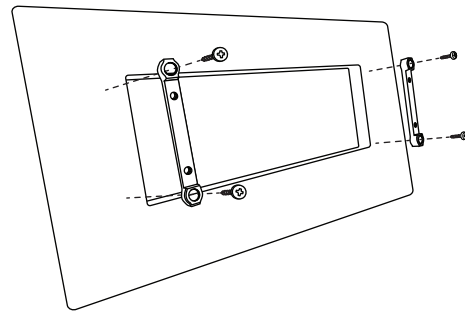


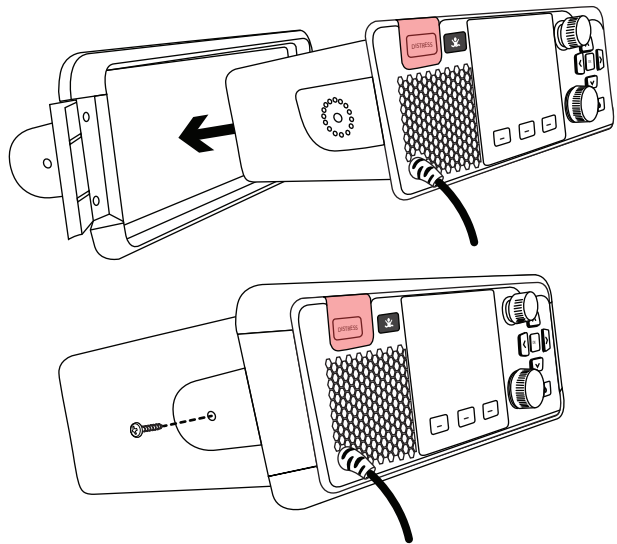
Make sure there is sufficient space around the proposed location to ensure that the silicone cover can be fitted. You will need at least 300mm x 130mm of space.



- 1** Cut along the dotted line to cut out the template.
- 2** Drill the corner holes out with a 15mm drill bit, if needed use a reduced shank drill bit.
- 3** Cut the hole for the X100, being careful to keep to the black line. If possible use a jigsaw with a guide bar to ensure the cuts are straight. Pull the GNSS and VHF cables through the hole and connect to the rear of the X-100.
- 4** Install the metal mounting brackets using the fastenings appropriate for the surface on which the radio is being mounted.



- 5** Insert the X100 into the flush mount frame, and fasten in place using the counter sunk screws.



- 6** Install the four M5 x 10mm screws to affix the mounting frame to the mounting brackets

